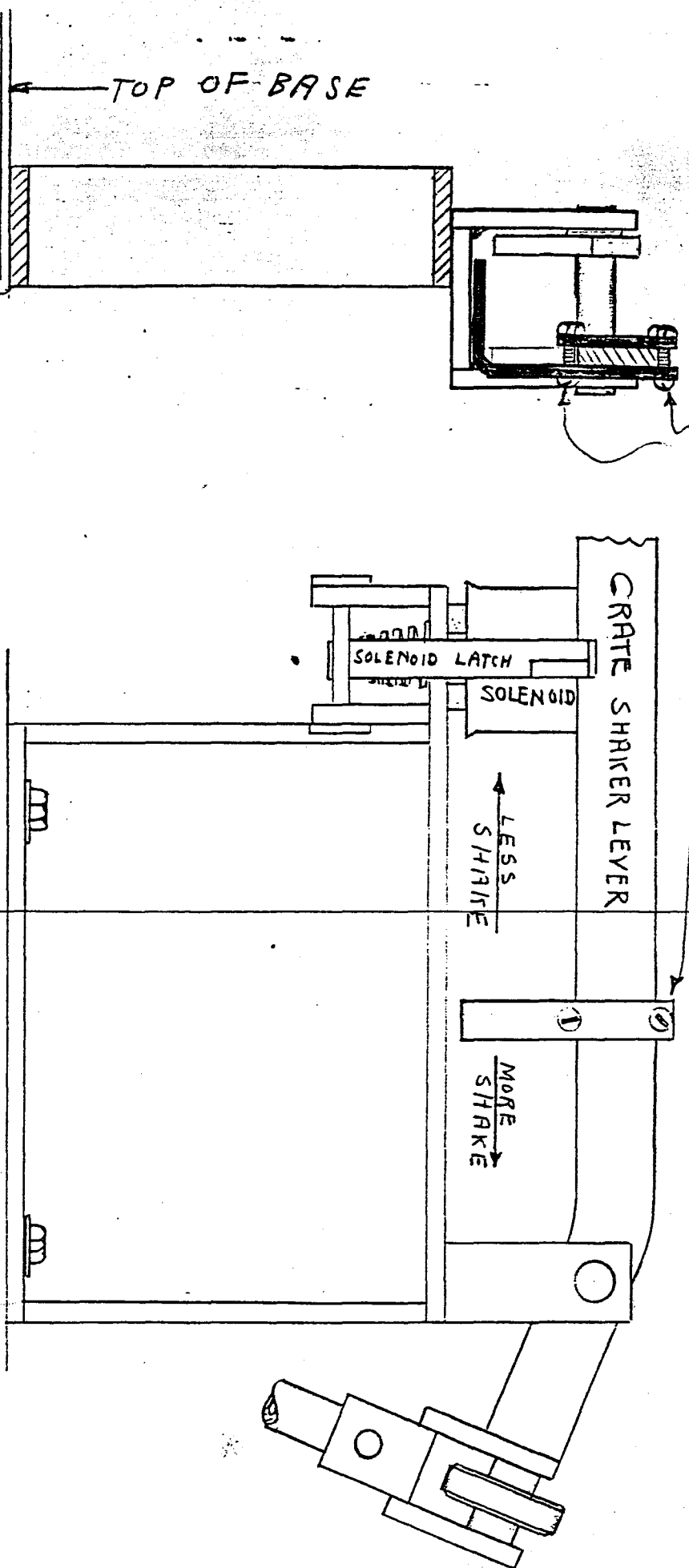


# SHAKE ADJUSTOR

Loosen screws to  
slide shake adjustor

SLIDE SHAKE ADJUSTOR TO CHANGE NO. OF  
TEETH TAKEN ON RATCHET WHEEL



Combustion tube should be filled up at all times except for a few days following a new fire. If fire is low, look for un-covered coal tube or some form of stoppage.

For summer operation the lower half of the combustion tube should be ashed up, thus grate switch continuously calls for shake. If fire is too thin (combustion tube  $\frac{1}{4}$  or more ashed up) move shake adjustor away from the solenoid. If fire is too thick (combustion tube  $\frac{1}{4}$  or less ashed up), move shake adjustor toward the solenoid.

Fire too thin - (may go out.  
(pickup may be slow

Fire too thick - (may cause temperature over-ride  
(may cause puff-back

No change of adjustment likely to be needed for winter operation.

7/10/49