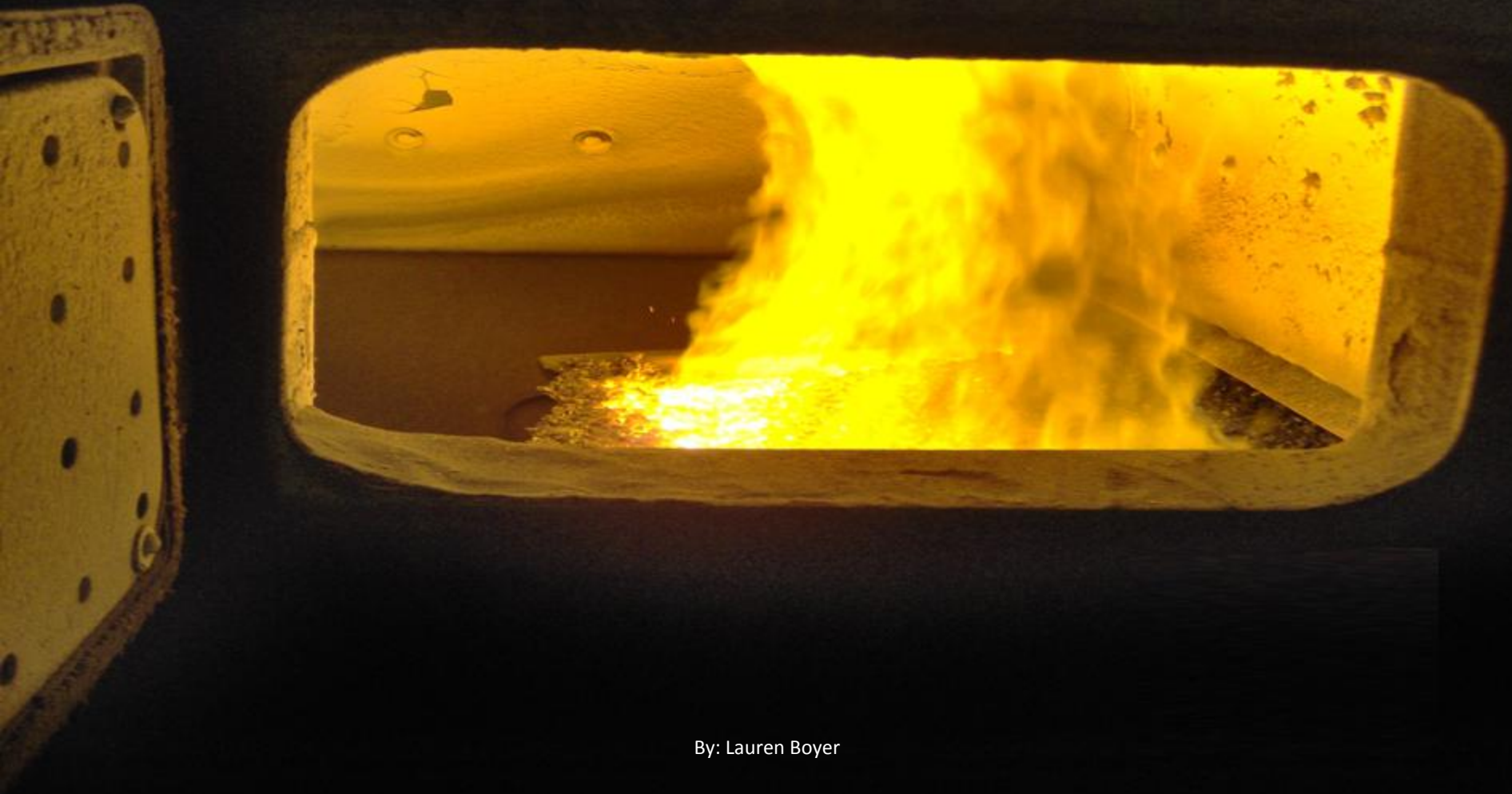


Coal Boilers



By: Lauren Boyer

Court House



01/27/2012
Back-up Natural Gas



01/27/2012

01/27/2012 Cyclonic Separator for exhaust

100 Ton Hopper



01/27/2012

Boiler with NAT gas back-up



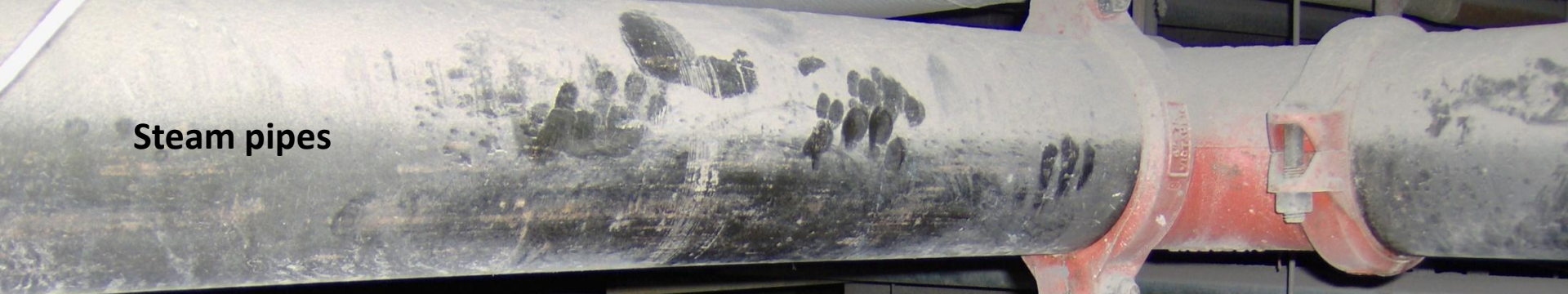
01/27/2012



01/27/2012

Controllers for NAT gas back-up

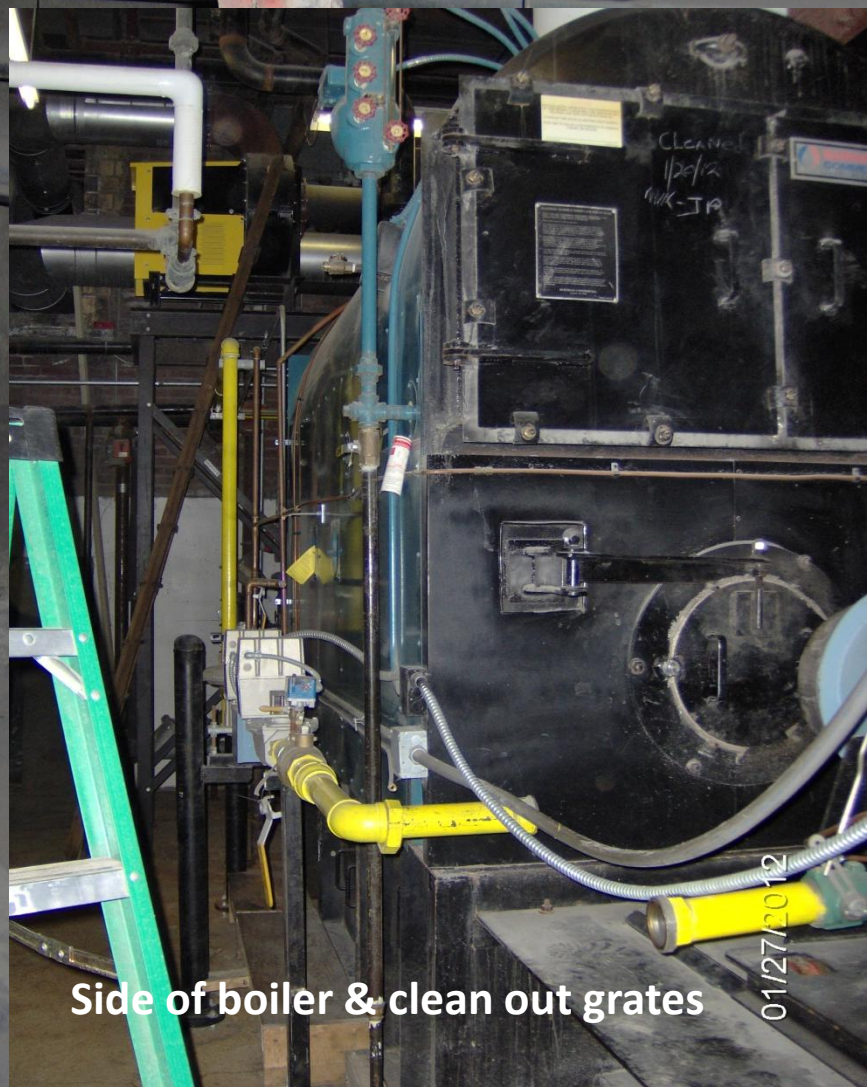
Steam pipes



Feed side of boiler w/ water cooled grate



01/27/2012



Side of boiler & clean out grates

01/27/2012



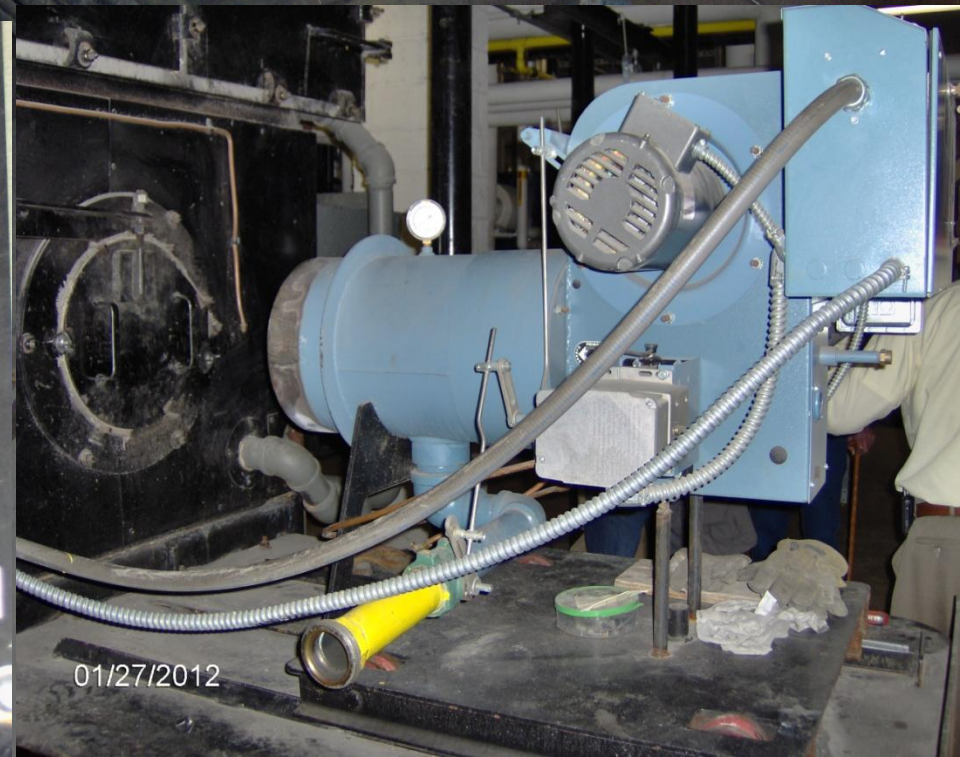
BURNHAM
COMMERCIAL
AMERICA'S BOILER COMPANY

MODEL NO. 4NL-662A NATL BD NO. 30348

GROSS OUTPUT	108.0	BHP	3601	MBH	3712	LBS/HR
GAS INPUT	4501	MBH(HIGH)	NO. 2	OIL INPUT	32.1	GPH(HIGH)
GAS INPUT		MBH(LOW)	NO.	OIL INPUT		GPH(LOW)
MAX. WORKING PRESSURE	15	PSI STEAM		PSI WATER		
MIN. SAFETY VALVE CAP.	5296	LBS/HR STEAM		MBH WATER		
ASME SYMBOL STAMPED ON SHELL	H	ORDER NO.				

01/27/2012 LANCASTER, PA 17604 USA

61460109





ITALIAN BAKERY

This unique Italian bread bakery's oven was built near the turn of the 20th century under the ownership of George Dallas.

Built of special firebrick, the oven measures 21x20 feet and reaches a temperature of 650°, taking 10 minutes to bake 375 one pound loaves of bread. It requires two tons of buckwheat sized hard anthracite coal monthly and is the only bakery of its kind in Pennsylvania.

TAMAQUA, PENNSYLVANIA.



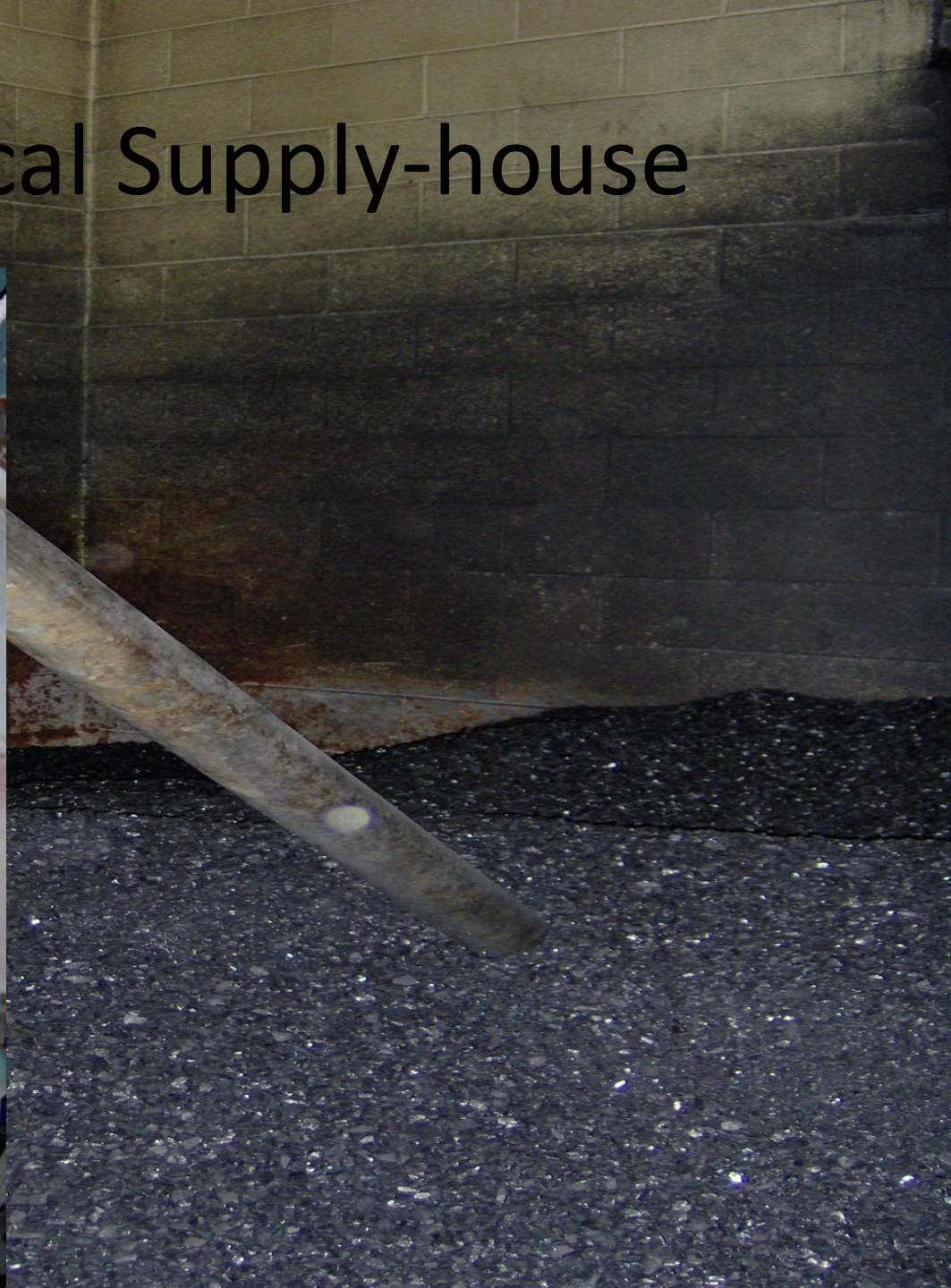
01/27/2012

TAMAQUA AREA
2004
PARTNERSHIP



Heating the bread oven

Boiler at Local Supply-house



01/27/2012

01/27/2012



01/27/2012



01/27/2012



01/27/2012

Large Baro



01/27/2012