

# GLENWOOD RANGES *and* HEATERS

---

INCLUDING

*Single Oven Cooking Ranges in hundreds of different styles and sizes, Double Oven Hotel Ranges, Heating Stoves for Coal, Heating Stoves for Wood, Heating Stoves for Wood or Coal, Warm Air Furnaces for Coal, Warm Air Furnaces for Wood, Warm Air Furnaces for Wood or Coal, Combination Warm Air and Hot Water Heaters, Steam and Hot Water Boilers*

---

DESIGNED AND MADE BY THE

WEIR STOVE COMPANY  
TAUNTON, MASSACHUSETTS, U. S. A.

---

WESTERN AGENTS

J. RETTERER, 167 Lake Street, CHICAGO, ILL.  
W. S. RAY MFG. CO., 44-48 Market St., SAN FRANCISCO, CAL.

# GLENWOOD *Oak*

*Made as a Direct or as an Indirect Draft Stove*

---

Sizes 20-30-40-50. 14-16-18-20-inch fire pots. For coal or wood.

Triangular grate for coal. Special grate for wood.

Furnished with either single or double fire pot as ordered. Magazine can be had for any size when a self-feeding coal stove is desired.

## SELLING FEATURES

THE TRIANGULAR GRATE is easy to shake and cleans the fire to perfection. An excellent feature of this grate is the ingenious way in which it is removed through the front, and the simplicity by which any one of the four grate bars may be removed and a new one replaced without having to purchase a whole new grate.

THE STEEL USED IN THE BODY is heavy gauge and of superior quality, and great care has been used in making it secure. At the top, ears are fastened to the steel drum, and by the use of bolts the drum is drawn firmly and perfectly tight against the deep flange on cast top. At the bottom the steel is securely fitted and fastened into a deep-cut joint at the top of fire pot, ensuring long service and a dust-tight construction.

AN EXTRA IRON LINING may be had for burning coal, which ensures the longest possible wear to the fire pot. The ash pan is convenient in size and very handy to remove and carry. The swing top may be turned to one side, allowing the large inside flat top to be used for heating water when desired. The feed door has several mica covered openings which show the fire and make a most cheerful appearance.

THE IMPROVED BACK DAMPER, which controls the fire so surely in the indirect style, is used only in the Glenwoods.

THE INDIRECT DRAFT OAK has the back pipe which provides increased heating surface and is much better in keeping a fire over night. The stove-pipe collar is adjustable to the back as well as on top, which is an especial advantage for houses which have a very low chimney funnel, as the stove pipe may be connected straight to the chimney, saving numerous pipe elbows and making a much neater job.

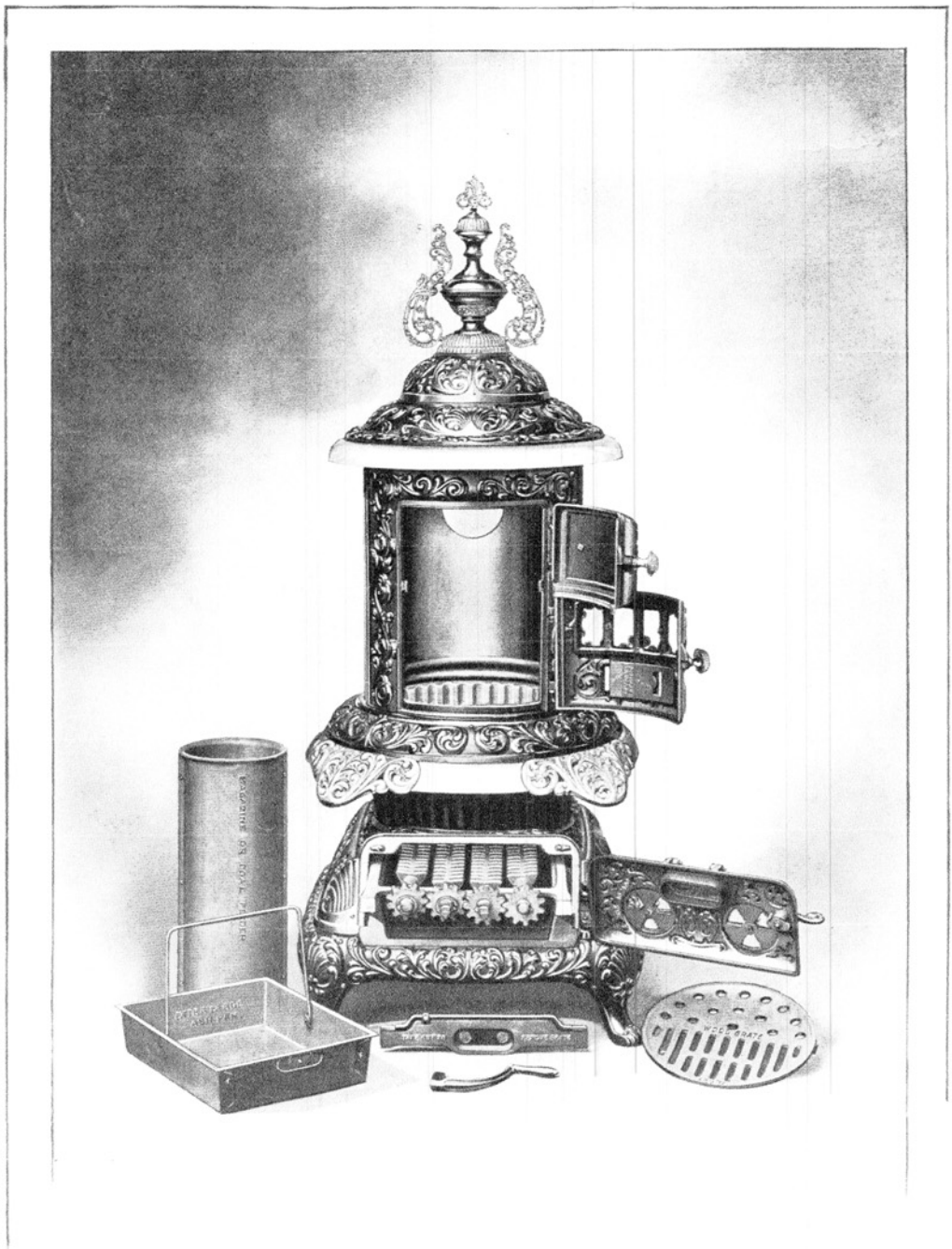
*Handsome illustrated booklets describing this stove furnished free for general distribution, with merchant's name and address neatly printed on the cover.*



## *Glenwood Oak*

Direct Style. Cabinet Base. Four sizes. For either Wood or Coal.  
Air-tight construction. Triangular Coal Grate. Large Ash Pan.

*Please read description on page sixty-eight.*



## *Glenwood Oak*

Two doors for feeding Wood. Flat wood grate which may be used alone, or resting on the coal grate. Triangular coal grate easily drawn out.

*Please read description on page sixty-eight.*



## *Glenwood Oak*

Indirect Style. Cabinet base. Four sizes. For either Coal or Wood.  
Air-tight construction. Triangular Coal Grate. Large Ash Pan.

*Please read description on page sixty-eight.*



### *Glenwood Oak*

The Extension Top is made for the 30-40 and 50 sizes, for either direct or indirect draft styles. With extension top the Glenwood Oak is recommended for heating halls, stores, and rooms of large dimensions, and is especially powerful in the indirect style as illustrated.

*Please read description on page sixty-eight.*



# Glenwood Stove Booklets



Furnished free for general distribution, with merchant's name and address prominently displayed on the cover

# *Hickory* GLENWOOD *Oak Stove*

---

Made as a direct or as an indirect draft stove. For wood or coal.

Sizes 13-15-17. 13-15-17-inch fire pots.

Draw centre grate for coal. Special grate for wood. Magazine can be had for any size where a self-feeding coal stove is desired.

## SPECIAL FEATURES

THE ASH PIT and lower draft door are fitted so absolutely tight that a wood fire may be kept over night with the greatest ease. The draft registers in the lower draft door are simply perfect in regulating a wood or coal fire and are sure to please.

The entire ornamental front is one casting, making it much more substantial. The main body is of the very polished steel which is noted for its radiating qualities. A new method of fastening the steel body to the cast bottom and top is very ingenious as well as strong.

THE ASH PAN is convenient in size and very handy to remove and carry. The nickel foot rails look well and are often convenient.

THE FEED DOOR has several mica-covered openings which show the fire and make a most cheerful appearance.

THE IMPROVED BACK DAMPER which controls the fire so surely in the indirect style is used only in the Glenwoods.

THE INDIRECT STYLE HICKORY is popular with users who wish to run a continuous fire with the least possible attention.

*Handsome illustrated booklets describing this stove furnished free for general distribution, with merchant's name and address neatly printed on the cover.*

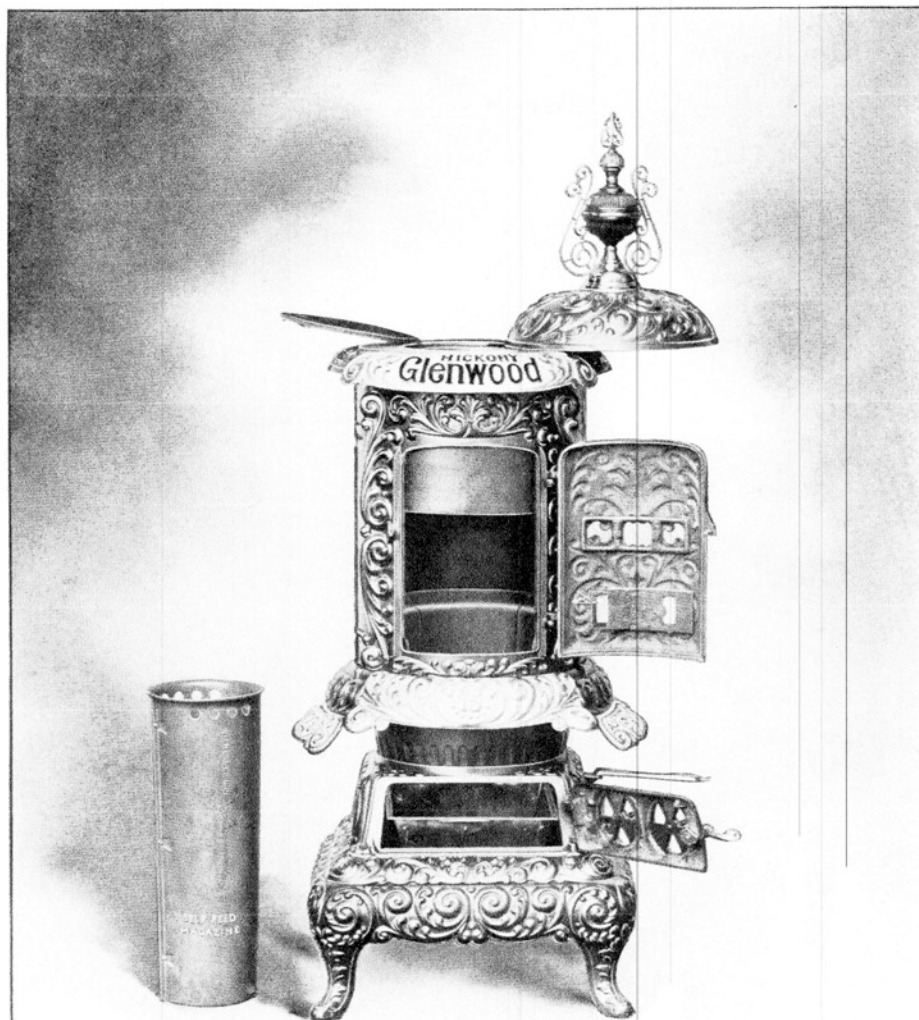




### *Hickory Glenwood Oak*

Direct Style. Cabinet base. Three sizes. Burns with economy either wood or coal. Air-tight construction. Strong steel body. Handy ash pan.

*Please read description on page seventy-four.*



### *Hickory Glenwood Oak*

The large Feed Door has a hinged smoke guard at the top, which swings back to admit large pieces of wood. The swing top may be turned to one side, and the inside flat top used for heating purposes.

*Please read description on page seventy-four.*



### *Hickory Glenwood Oak*

Indirect Style (with back pipe). Three sizes. For Coal or Wood.  
Air-tight construction. Strong steel body. Handy Ash Pan.

*Please read description on page seventy-four.*

# Grand GLENWOOD

## *Parlor Stove*

---

Indirect draft. Surface burner. For coal.

Draw centre grate. Sizes 102-103. 12-inch and 14-inch fire pots.

### SPECIAL FEATURES

THE BROAD, REVERTIBLE FLUES on either side are so arranged that the heat descends to the very bottom of the base, and continuing over same, passes up the back pipe to chimney, thus ensuring a most efficient and economical heater.

THE ORNAMENTAL TOP, when swung to the side, discloses a deep, commodious oven which may be utilized for warming or baking.

THE TEA-KETTLE ATTACHMENT, which is at the back, has a convenient cover hole where a kettle of water may be quickly heated.

THE DRAW CENTRE GRATE is sure to please.

THE DAMPERS are splendidly planned to control the fire with but little attention, and so perfect is the fitting of each individual part that a more thoroughly dust-proof and cleanly stove can hardly be imagined.

MICA PANELS in each side and in the feed door give a cheerful and pleasing appearance.

THE SOLID CAST FRONT is very substantial and allows the doors to be perfectly fitted.

THE ASH PAN is convenient in size and well made. The clinker door provides ample room for removing clinkers and is dust-proof.

THE NICKEL FOOT RAILS AND TOP RIM may be removed when cleaning the stove.

*Handsome illustrated booklets describing this stove furnished free for general distribution, with merchant's name and address neatly printed on the cover.*



### *Grand Glenwood Parlor*

Indirect Draft (with back pipe). Cabinet base. Two sizes. For Coal.  
Surface Burner. Brick-lined Fire Pot. Draw Centre Coal Grate.

*Please read description on page seventy-eight.*

# *Our* GLENWOOD *Parlor Stove*

---

Indirect draft. Surface burner. For coal. Draw centre grate. Sizes, 9-11-13. 9-inch, 11-inch and 13-inch fire pots.

No. 13 size can be had with extension top.

## SPECIAL FEATURES

THE REVERTIBLE FLUES carry the heat down either side entirely to the bottom, so that the greatest possible amount of heat is gained from the fuel used.

THE FIRE POT is extra deep, and the sides are straight.

THE ASH PIT is fitted dust tight.

THE NICKEL FOOT RAILS AND TOP RIM are removable, for convenience in cleaning the stove.

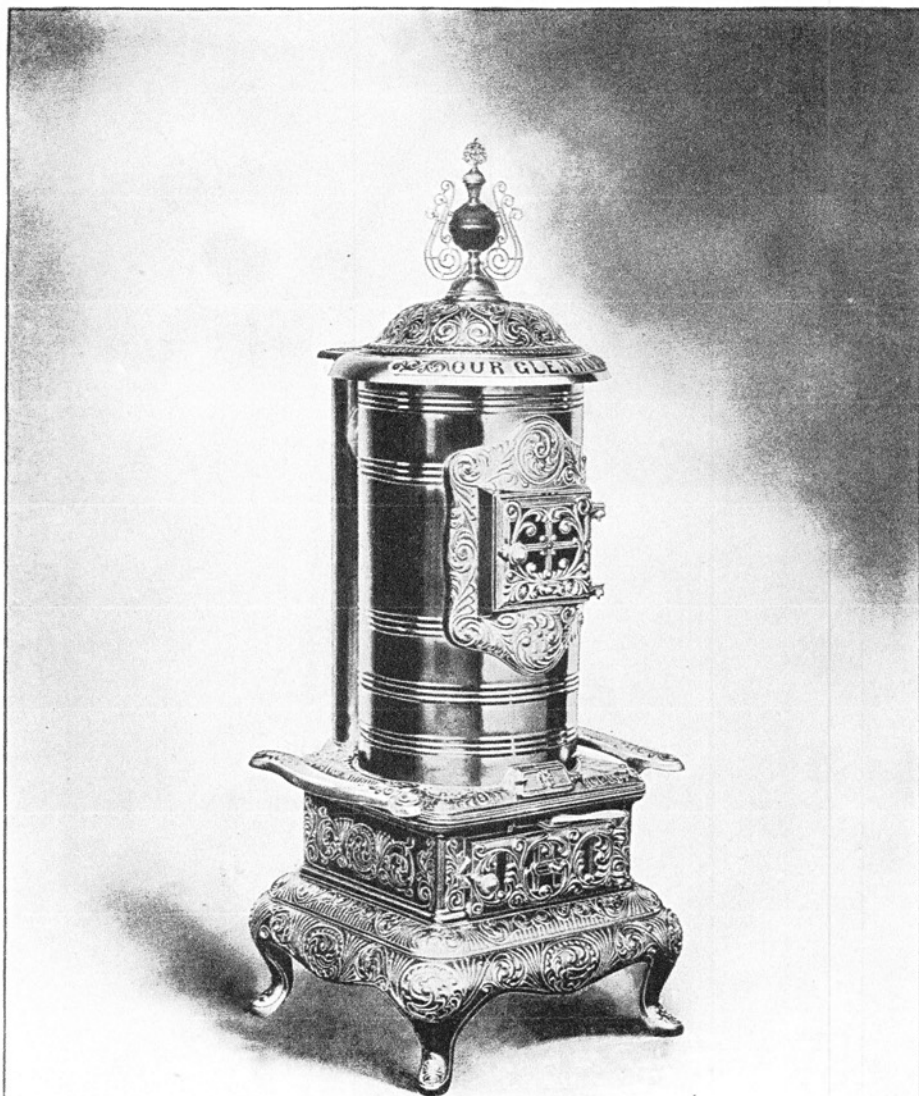
THE DRAW CENTRE GRATE is easy to shake and well adapted for keeping a continuous fire.

THE ORNAMENTAL TOP swings to either side, and the oven beneath is often handy for heating purposes.

THE ASH PAN is strongly made and has a good handle.

*Handsome illustrated booklets describing this stove furnished free for general distribution, with merchant's name and address neatly printed on the cover.*





### *Our Glenwood Parlor*

Indirect Draft (with back pipe). Cabinet base. Three sizes. For Coal. Surface burner. Brick-lined Fire Pot. Draw Centre Coal Grate.

*Please read description on page eighty.*





### *Sunny Glenwood Parlor*

Direct Draft. Surface burner. Cabinet base. Three sizes. For Coal. Brick-lined Fire Pot. Sizes, 12-14-16. 12-14-16 inch Fire Pots. Solid cast front. Mica paneled Feed Door. Draw Centre Coal Grate. Large swing top. Clinker door. Planished iron body. Roomy ash pan.



### *Solar Glenwood Parlor*

Indirect Draft (with back pipe). Surface burner. Three sizes. For Coal. Brick-lined Fire Pot. Sizes, 12-14-16. 12-14-16 inch Fire Pots. Solid cast front. Cabinet base. Mica paneled Feed Door. Draw Centre Coal Grate. Large swing top. Planished iron body. Roomy ash pan.



### *Pearl Glenwood Parlor*

Direct Draft. Surface burner. Three sizes. For Coal. Brick-lined Fire Pot. Sizes, 10-12-14. 10-12-14 inch Fire Pots. Draw Centre Coal Grate. Planished iron body. Swing top with flat top beneath. Ash Pan. Mica paneled Feed Door. Nickel top rim and Foot Rails.



### *Ruby Glenwood Parlor*

Indirect Draft (with back pipe). Surface Burner. Three sizes. For Coal. Brick-lined Fire Pot. Sizes, 10-12-14. 10-12-14 inch Fire Pots. Draw Centre Coal Grate. Swing top with flat top beneath. Ash Pan. Mica paneled Feed Door. Nickel top rim and Foot Rails.